

SensoWash® Slim

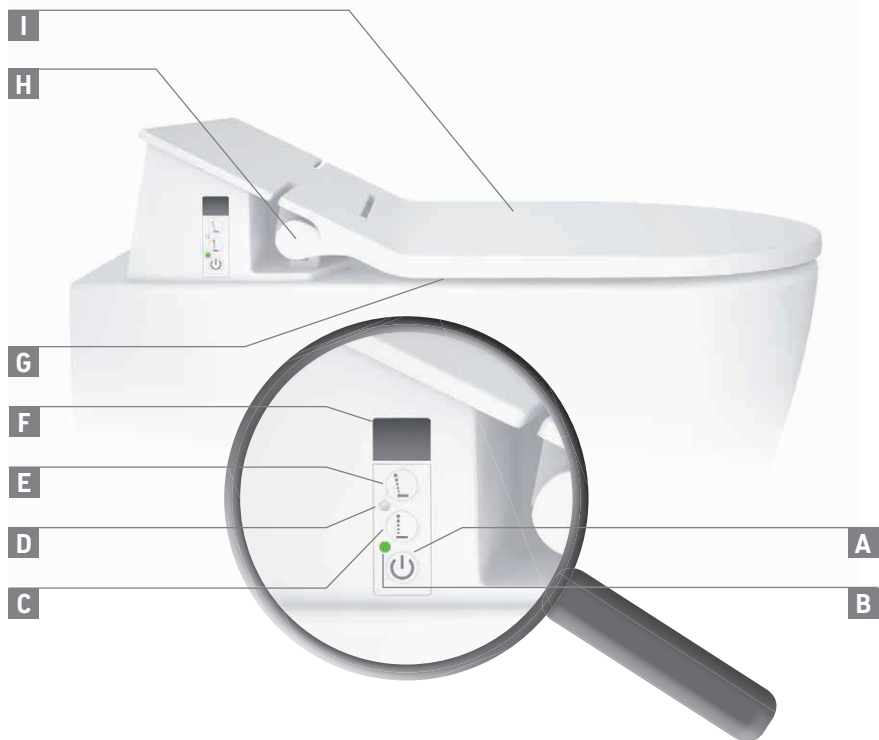
Operating instructions

操作说明

Shower toilet unit

电子坐便器





Contents

1. Brief overview	3
1.1 Toilet unit.....	3
1.2 Remote control	3
2. Description of Symbols	3
3. For your safety	4
3.1 Normal Use.....	4
3.2 Safety instructions.....	4
4. Basics of operation	8
4.1 Remote control	8
4.2 Status LEDs.....	9
5. Initial operation.....	9
Remote control	9
Power supply	9
Switch SensoWash® on.....	9
6. Operating	10
6.1 Switching the SensoWash® on / off	10
6.2 Shower functions.....	10
Activating / deactivating "Rearwash"	10
Activating / deactivating "Ladywash"	11
Activating / deactivating "Comfortwash"	11
Adjusting the water spray intensity.....	12
Adjusting the spray wand position	12
Adjusting the water temperature.....	13
6.3 Seat heating	13
Adjusting the seat temperature	13
6.4 Settings	14
Adjusting the night light	14
Energy saving mode.....	15
Activating / deactivating the confirmation tone	16
Lock / unlock the remote control	16

7. Cleaning and Care.....	18
7.1 Seat and lid.....	18
7.2 Spray wand and nozzle	18
Manual cleaning of the spray wand and nozzle.....	18
Self-cleaning of the spray wand and nozzle.....	19
7.3 Remote control	19
8. Disposal.....	20
9. Troubleshooting support	20
10. Technical Data	26

1. Brief overview

1.1 Toilet unit

A	Power
B	Status LED
C	Rearwash
D	Ambient light sensor
E	Ladywash
F	Infrared receiver
G	Night light
H	Soft closing mechanism
I	Seat heating


1.2 Remote control


1	Infrared transmitter
2	Rearwash
3	Ladywash
4	Comfortwash
5	Spray wand position
6	Water temperature
7	Seat temperature
8	Stop
9	Battery Compartment

i The overviews referred to are collected together on the fold out page.

EN

2. Description of Symbols

 **WARNING** Indicates a hazardous situation which, if not avoided, could result in death or serious injury.

 **CAUTION** Indicates a hazardous situation which, if not avoided, could result in minor or moderate injury.

NOTICE Is used to address practices not related to physical injury.

i Hints and tips are provided here.

> This is a prompt requesting your input.

 Acoustic signal.

 Timed automatic function.

3. For your safety

To ensure that you will enjoy your SensoWash®, read these operating instructions carefully, particularly the safety instructions.

Keep the operating instructions in a safe place and in the case of a change in ownership, ensure they are given to the new owner.

These operating instructions correspond to the device's state of technology at the time of printing. Duravit reserves the right to make changes in terms of further development.

3.1 Normal Use

SensoWash® Slim is a shower toilet seat with spray attachment for rearwash and ladywash cleansing functions and additional comfort features. It can be used as a normal toilet at any time. Its use is limited exclusively to enclosed spaces.

Any other usage will be deemed as not corresponding with normal usage. Duravit undertakes no liability for abnormal usage.

3.2 Safety instructions

Read and observe the following safety instructions carefully!

Requirements for the user

This appliance is not intended for use by persons (including children) with reduced physical, sensory or mental capabilities, or lack of experience and knowledge, unless they have been given supervision or instruction concerning use of the appliance by a person responsible for their safety.

Children should be supervised to ensure that they do not play with the appliance.



WARNING Health damage!

The product must be earthed.

- Compare with the mounting instructions.

Only use the device when it is fully functional

- Make sure that the power cord is not damaged.

- The power cord must not become jammed or pinched.
- Keep the power cord away from hot surfaces and sharp edges.
- Do NOT use the product if it is not working properly.
Disconnect from the power supply immediately. Close the stop valve to interrupt the water supply. Contact help@duravit.com.

Avoid malfunctions and damage to the product as a result of improper use.



CAUTION

Health damage and potential product damage!

- Supply the device with cold drinking water from the main water system.
- The product itself does not have electrical leakage protection function, it must be installed in circuit where there is leakage protection device installed.
- Means for disconnection must be incorporated in the fixed wiring in accordance with the wiring rules and having a contact separation in all poles that provide full disconnection under overvoltage category III conditions.
- Check the rated power and choose cable cross section accordingly.
- Do NOT sit, stand or lean on the lid.
- Do NOT connect any waste water, grey water, industrial water, sea water or other untreated or semi-treated water.
- Do NOT detach seat and lid for any purpose.
- Do NOT damage the surface of the seat.
- If the surface of the seat is damaged, contact help@duravit.com.
- DO NOT open and close seat and lid with excessive force.
- If the SensoWash® is moved from a cold location to a warm location, condensation may form. Leave the unit switched off for a few hours.
- Do NOT install the SensoWash® in rooms where there is a danger of frost. The room temperature must not be less than 4°C.
- Do NOT place open fire sources, candles, cigarettes, or similar, on the SensoWash®.
- Do NOT expose the SensoWash® directly to water or sunlight.
- Do NOT climb on or stand on the product.

- Do NOT place any heavy objects on the lid.
- Do NOT deliberately soil, spray or block the spray wand.

Repairs must only be carried out by a person with the necessary expertise.

- Do NOT carry out modifications, tamper with, install additional equipment or attempt to repair the SensoWash®.
- If the supply cord is damaged, it must be replaced by the manufacturer, its service agent or similarly qualified persons in order to avoid a hazard.
- Repairs must be carried out by qualified electricians or technicians.
- Improperly performed repairs can lead to accidents, damage and malfunctions.
- Do NOT use attachments not recommended by Duravit.

Use of batteries



WARNING

Risk of fatal injury if swallowed/Chemical burn hazard

This product contains coin / button cell batteries. Do not ingest battery! If the coin / button cell battery is swallowed, it can cause severe internal burns in just 2 hours and can lead to death.

- > Do not ingest battery, Chemical Burn Hazard.
- > Keep new and used batteries away from children. If the battery compartment does not close securely, stop using the product and keep it away from children.
- > If you think batteries might have been swallowed or placed inside any part of the body, seek immediate medical attention.



CAUTION

Damage to health caused by leaking battery acid

- > Avoid contact with skin, eyes and mucous membranes if battery acid has leaked.
- > In case of contact with the acid, flush the affected areas with large amounts of clean water and consult a doctor immediately.
- > Do not expose the batteries to extreme conditions: avoid contact

with hot surfaces or direct sunlight. Otherwise there is a risk of leakage.

- > The cells shall be disposed of properly, including keeping them away from children. Even used cells may cause injury.

NOTICE

Product and/or property damage

- > Batteries may not be recharged, reactivated by other means, dismantled or exposed to fire.
- > The supply terminals are not to be short-circuited.
- > Always remove empty batteries from the remote control immediately. They may leak and cause damage.
- > Do not insert new and old batteries together in the remote control.
- > Different types of batteries are not to be mixed.
- > Clean the battery and contacts before inserting the battery.
- > Batteries are to be inserted with the right polarity.
- > Remove the batteries if you do not use the remote control for an extended period.

4. Basics of operation

4.1 Remote control

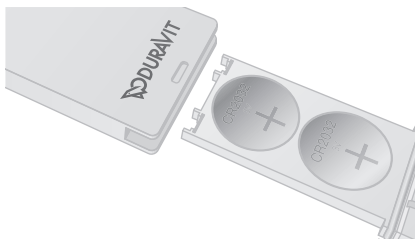
SensoWash® is operated via the remote control. Settings are altered via the remote control as well.

Press the respective button on the remote control to switch on a function. The button lights up white briefly.

To switch off a shower function, press "Stop" **8** on the remote control.

If the remote control is not available or the batteries are empty, then basic functions can also be switched on or off from the side control buttons.

- > Press the lock of the "Battery Compartment" **9** to open it.
- > Insert two lithium batteries (CR2032) with + facing upwards.
- > Close the "Battery Compartment" **9**.



4.2 Status LEDs

- Red illuminated: SensoWash® is in the "Standby mode", all functions cannot be used.
- Orange illuminated: SensoWash® is in the "Energy saving mode", all functions can be used.
- Green illuminated: SensoWash® is in the "On mode", all functions can be used.
- Green flashing: SensoWash® is in the "Initialization" process, only "Power" **A** on the seat unit can work.
- Red flashing: Malfunction. Disconnect main power supply and proceed with chapter 9.

5. Initial operation

Remote control

- > Press the lock of the "Battery Compartment" **9** to open it.
- > Remove the foil safety tag in the battery compartment.
- > Close the "Battery Compartment" **9**.

Power supply

- > Connect the main power supply.
- i** SensoWash® will start "Initialization" for about 15 seconds when it is connected to the power supply. During this time, the "Status LED" **B** flashes green and only "Power" **A** on the seat unit can work, all other operations will not work.

Switch SensoWash® on

Requirement: SensoWash® is in the "Standby mode", the "Status LED" **B** is red illuminated.

- > Press "Power" **A** on the seat unit.
SensoWash® is now switched on.
The "Status LED" **B** is green illuminated.
All functions can be used.

6. Operating

6.1 Switching the SensoWash® on / off

- > Press "Power" **A** on the seat unit to switch on SensoWash®. A green Status LED indicates "On mode".
- > Press "Power" **A** on the seat unit again to switch off SensoWash®. A red Status LED indicates "Standby mode".

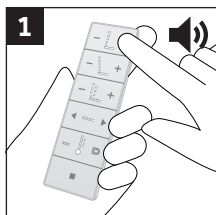
6.2 Shower functions

- i** SensoWash® automatically cleans the retracted spray wand before and after washing functions are used. The shower functions terminate automatically after 2 minutes or immediately when "Stop" **8** is pressed.

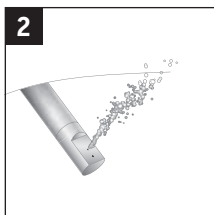


Activating / deactivating "Rearwash"

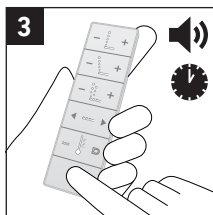
Gentle and safe rear cleansing.



- > Press Plus or Minus to activate Rearwash.



- Rearwash is active, the spray wand extracts slowly



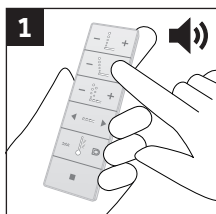
- > Press Stop to end Rearwash or after 2 min. auto stop.

Alternatively press "Rearwash" **C** on the seat unit to activate Rearwash. Press "Rearwash" **C** on the seat unit again to stop Rearwash or after 2 min. auto stop.

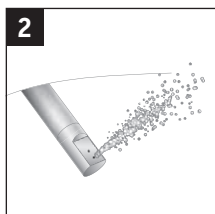


Activating / deactivating "Ladywash"

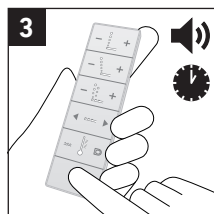
Additional nozzle outlet for female intimate care.



> Press Plus or Minus to activate Ladywash.



Ladywash is active, the spray wand extracts slowly



> Press Stop to end Ladywash or after 2 min. auto stop.

Alternatively press "Ladywash" **E** on the seat unit to activate Ladywash. Press "Ladywash" **E** on the seat unit again to stop Ladywash or after 2 min. auto stop.

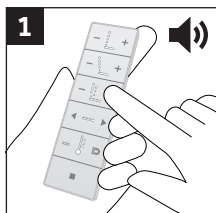
EN



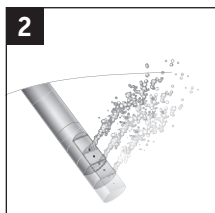
Activating / deactivating "Comfortwash"

Forward and backward movement of spray wand during use of shower.

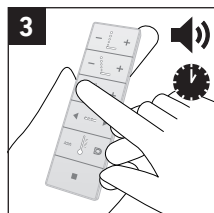
Requirement: Rearwash or Ladywash function is activated.



> Press Plus to activate Comfortwash.



Comfortwash is active.



> Press Minus to stop Comfortwash. The function (Rear- or Ladywash) that was previously set is still active. After 2 min. auto stop.



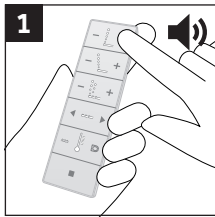
Adjusting the water spray intensity

The water spray intensity can be set individually in 3 steps:

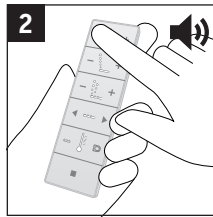


Low > Medium > High

Requirement: Rearwash or Ladywash function is activated and the icon illuminated.



> Press Plus to increase the Rearwash intensity.



> Press Minus to decrease the Rearwash intensity.

i Same action for “Ladywash” **3**.



Adjusting the spray wand position

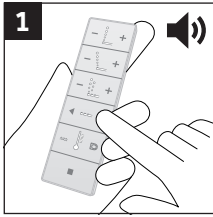
The spray wand position can be set individually to 5 different positions:



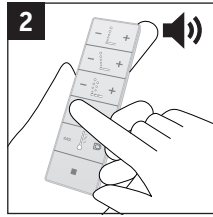
Front



Rear



> Press Right arrow to retract the spray wand.



> Press Left arrow to extract the spray wand.



Adjusting the water temperature

The water temperature can be individually adjusted in 4 levels:



Off

>



Low

>

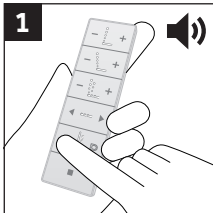


Medium

>



High



> Press Water Temperature to cycle through.

6.3 Seat heating

Adjusting the seat temperature

The seat temperature can be individually adjusted in 4 levels:



Off

>



Low

>

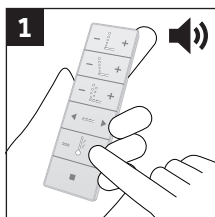


Medium

>



High



> Press Seat Temperature to cycle through.

i How to save energy see chapter 6.4 "Settings".

6.4 Settings

Adjusting the night light

Illuminated inner bowl for night mode orientation, also visible with closed lid.

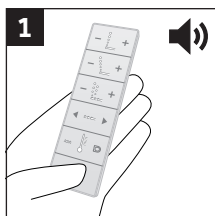
In the Auto mode the night light will be switched on and off according to the surrounding brightness.

The night light can be set individually in 3 modes:

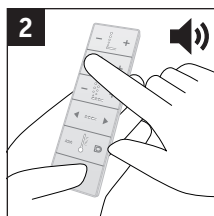
On > Auto > Off

Press the following button combination to cycle through the night light settings.

Therefore, the stop button has to be pressed constantly.



> Press and hold Stop.



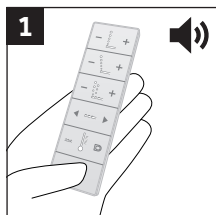
> Press Lady-wash Minus.

Energy saving mode

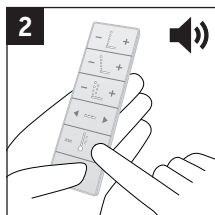
Timed energy saving mode is to save energy at a desired point of time, e.g. at night.

When the timed energy saving mode gets activated, the seat heating is deactivated for the next 8 hours and then gets automatically reactivated for 16 hours. This procedure is repeated at the same time every day until the energy saving mode gets deactivated.

Press the following button combination just at the desired time when the 8 hour saving period should start to cycle through the timed energy saving mode settings. Therefore, the stop button has to be pressed constantly.



> Press and hold Stop.



> Press Seat Temperature.

❗ Status LED is illuminated green: Off
Status LED is illuminated orange: On

To change the point of time of the “Timed energy saving mode”, deactivate the “Timed energy saving mode” and set it again at your desired time .

❗ To deactivate the seat heating permanently, see chapter 6.3.

Auto energy saving mode

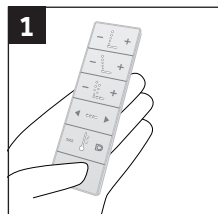
If all SensoWash® functions have been inactive for 48 hours, the auto energy saving mode will activate automatically. The seat heating is now inactive. When any SensoWash® function is used, the auto saving energy mode will be deactivated again and the previous settings will be automatically reactivated.

Activating / deactivating the confirmation tone

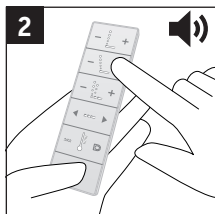
To indicate any command.

Press the following button combination to cycle through the confirmation tone settings.

Therefore, the stop button has to be pressed constantly.



> Press and hold Stop.



> Press Lady-wash Plus.

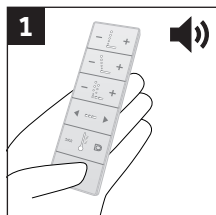
- i Short confirmation tone: On
- Longer confirmation tone: Off

Lock / unlock the remote control

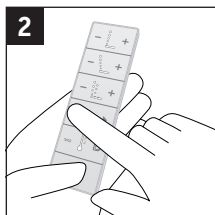
Blocking function via remote control. No function can be used while this function is activated.

- i Press within 5 sec. the following button combination to lock / unlock the remote control.

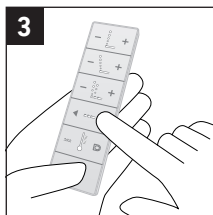
Therefore, the stop button has to be pressed constantly.



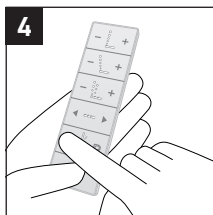
> Press and hold Stop.



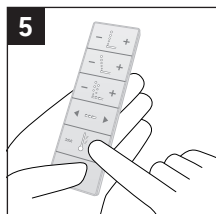
> Press Spray wand position Left arrow.



> Press Spray wand position Right arrow.



> Press Water Temperature.



> Press Seat Temperature.

- i** Spray wand position and Temperature icons flash three times:
Locked
- Spray wand position and Temperature icons flash one time:
Unlocked

7. Cleaning and Care

7.1 Seat and lid

NOTICE

Yellow discolouration or paint delamination due to incorrect cleaner!

- > Do not use abrasive cleaning agents or cleaning agents containing chlorine or acid.
- > Only use cleaning agents and equipment which is intended for this area of application.
- > Follow the instructions of the cleaning agent manufacturer.
- > Never mix cleaners.

A mild soap solution is suitable for daily cleaning.

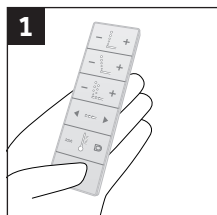
Clean the seat unit regularly, or immediately if it is soiled. If the cleaning is not carried out regularly enough, soiling may become visible which can lead to stubborn dirt.

7.2 Spray wand and nozzle

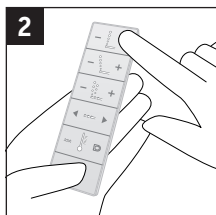
Manual cleaning of the spray wand and nozzle

Clean the spray wand and nozzle regularly, or immediately if they are soiled.

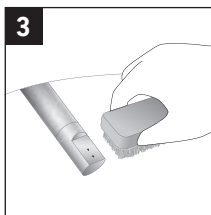
See picture on fold out page if you want to detach the spray nozzle for cleaning.



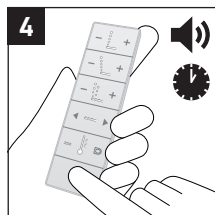
> Press and hold Stop.



> Press Rear-wash Plus.



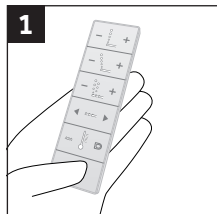
> Clean the nozzle with a cloth, sponge or brush and mild cleaning agent.



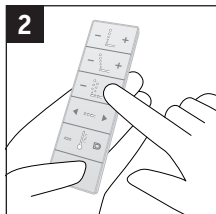
> Press Stop to end the cleaning or after 2 min. auto stop.

Self-cleaning of the spray wand and nozzle

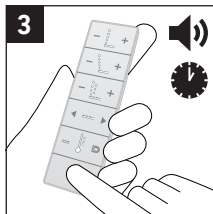
Spray wand and nozzle are cleaned automatically.



> Press and hold Stop.



> Press Comfortwash Plus.



> Press stop to end cleaning or after 90 sec. auto stop.

i Spray wand and nozzle are cleaned automatically before and after each use.

7.3 Remote control

> Clean the remote control and wall holder with a soft, damp cloth.

8. Disposal



The crossed-out wheeled bin logo requires the separate collection of waste electric and electronic equipment (WEEE).

Electric and electronic equipment may contain dangerous and hazardous substances. Do not dispose of this appliance as unsorted municipal waste. Return it to a designated collection point for the recycling of WEEE. By doing so, you will help to conserve resources and protect the environment. Contact your retailer or local authorities for more information.

Used batteries must be disposed of properly. For this purpose, appropriately labelled containers for disposal of batteries are provided in shops where batteries are sold and at community collection points.

Children must not play with plastic bags and packaging material, due to possible injury or danger of suffocation. Store such material safely or dispose of it in an environmentally-friendly manner. If possible, keep the packaging until the warranty period expires.

9. Troubleshooting support

Recommendation: Initial general action in case of a malfunction

> Disconnect the unit from the mains at the fuse box for at least 3 hours and then reconnect it again.

If your unit does still not work properly after following the instructions mentioned below, contact Duravit help@duravit.com. Have the article and serial number ready. These can be found on the nameplate on the back of the operating instructions.

Problem	Potential cause	Solution	Ch.
Indicator lamps and alarm function			
The "Status LED" B on the unit flashes red once each 3 seconds.	Malfunction.	<ul style="list-style-type: none"> > Switch off SensoWash®. > Switch on SensoWash® again. If flashing does not stop: <ul style="list-style-type: none"> > Cut off power supply. > After 30 sec. connect it again. 	
The "Status LED" B on the unit flashes red twice each 3 seconds.	Malfunction.	<ul style="list-style-type: none"> > Switch off SensoWash®. > Switch on SensoWash® again. If flashing does not stop: contact help@duravit.com .	
The "Status LED" B on the unit flashes red three times each 3 seconds.	Malfunction.	<ul style="list-style-type: none"> > Contact help@duravit.com. 	
The "Status LED" B on the unit flashes red four times each 3 seconds.	Malfunction.	<ul style="list-style-type: none"> > Turn off "Water temperature" 6. > Activate any shower function. 	6.2
A continuous confirmation tone is audible.	Malfunction.	<ul style="list-style-type: none"> > Cut off the power supply. > After 30 sec. connect it again. 	

Problem	Potential cause	Solution	Ch.
General function			
SensoWash® is not working.	SensoWash® is not switched on ("Status LED" B is not illuminated).	> Switch on the main power supply.	
	SensoWash® is in Standby mode ("Status LED" B is red illuminated).	> Switch to "On mode". 6.1	
A water leak exists.	Malfunction.	> Close the main valve for the water supply. > Disconnect the power supply. > Call the installer.	

Remote control

Icons on remote control flash during operation (instead of being illuminated).	The batteries are low.	> Change the batteries.	4.1
--	------------------------	-------------------------	-----

Problem	Potential cause	Solution	Ch.
The remote control does not work.	No batteries are inserted.	> Insert batteries.	4.1
	The batteries are flat.	> Change the batteries.	4.1
	The battery connections are reversed.	> Insert the batteries the correct way.	4.1
	The remote control is locked ("Spray wand position" 5 and "Water temperature" 6 flash three times).	> Unlock the remote control.	6.4
	The remote control is defective.	> Contact your installer.	

EN

Rearwash / Ladywash

Switching between the Rearwash and Ladywash takes too long.	When switching between Rearwash and Ladywash, the spray wand moves back then forward again after self-cleaning is complete.	This is normal.	
The water spray intensity is too weak.	The water spray intensity has been set to "Low".	> Adjust the "Water spray intensity" 2 and/or 3 to "Medium" or "High".	6.2
	The water supply hose has buckled.	> Contact your installer.	

Problem	Potential cause	Solution	Ch.
The water temperature is not warm enough.	The water temperature has been set to "Off" or "Low".	> Adjust the "Water temperature" 6 to "Medium" or "High".	6.2
The water temperature is too high.	The "Water temperature" 6 has been set to "High".	> Adjust the "Water temperature" 6 to "Medium" or "Low".	6.2
The water spray from the spray wand suddenly stops.	The function automatically stops after 2 minutes.	This is normal.	
A jet of water is not emerging from the spray wand.	The spray nozzle is clogged.	> Clean the spray nozzle.	7.2

Seat heating

The seat is not warm enough.	The "Seat temperature" 7 has been set to "Off" or "Low".	> Adjust the "Seat temperature" 7 to "Medium" or "High".	6.3
	The product is in the "Timed energy saving mode".	This is normal. > To heat the seat, switch off the "Timed energy saving mode".	6.3
The seat temperature is too high.	The "Seat temperature" 7 has been set to "High".	> Adjust the "Seat temperature" 7 to "Medium" or "Low".	6.3

Night light function

The night light does not come on.	The night light has been set to Off mode.	This is normal. > Set the night light to Auto or On mode.	6.4
	The night light is in Auto mode and the ambient light is bright.	This is normal.	
The night light stays on continuously.	The night light has been set to On mode.	This is normal. > Set the night light to Auto or Off mode.	6.4
	The night light is in Auto mode and the ambient light is dim.	This is normal.	
	The ambient light sensor window is not clean.	> Clean the "Ambient light sensor" D window.	

Manual cleaning function of the spray wand

The spray wand retracts automatically.	The function automatically stops after 2 minutes.	This is normal.
--	---	-----------------

Automatic self-cleaning

Water is dripping out of the retracted spray wand.	The spray wand is cleaned automatically before and after washing.	This is normal.
--	---	-----------------

10. Technical Data

Article number	611000 00 2 10 0300 611200 00 2 10 0300
Rated voltage	220 - 240 V
Frequency	50-60 Hz
Rated power	1080 W
Temperature range	
• Operating temperature	4 - 40 °C
• Water temperature	32 - 40 °C
• Seat temperature	33 - 37 °C
Incoming water pressure	0.07 - 0.75 MPa (0.7 - 7.5 bar)
Water consumption in spray mode	0.35 - 0.60 l/min
Protection degree	IP X4 Protection against water spray from all sides
Warranty	Our warranty terms can be found in our General Terms and Conditions (GTC) at www.pro.duravit.com/gtc .

EN

目录

1. 概览	29
1.1 坐便器本体	29
1.2 遥控器	29
2. 符号说明	29
3. 保证您的安全	30
3.1 正常使用	30
3.2 安全说明	30
4. 操作基础知识	33
4.1 遥控器	33
4.2 LED状态指示灯	33
5. 初始化操作	34
遥控器	34
电源	34
开启SensoWash®	34
6. 操作	34
6.1 开启/关闭SensoWash®	34
6.2 清洗功能	34
激活/停用“臀位清洗”	35
激活/停用“女士清洗”	35
激活/停用“舒适清洗”	36
调节喷水强度	36
调节喷管位置	37
调节水温	37
6.3 座圈加热	38
调节座圈温度	38
6.4 设置	38
设置夜灯	38
节能模式	39
激活/停用确认音	40
锁定/解锁遥控器	40
7. 清洁和维护	41
7.1 座圈和盖板	41
7.2 喷管和喷头	42

手动清洁喷管和喷头42

喷管和喷头的自洁功能42

7.3 遥控器42

8. 废弃物处理.....43

9. 故障解答43

10. 技术参数47

1. 概览

1.1 坐便器本体


- A 电源
- B LED状态指示灯
- C 臀位清洗
- D 环境光感应器
- E 女士清洗
- F 红外接收器
- G 夜灯
- H 缓冲盖板机制
- I 座圈加热


1.2 遥控器


- 1 红外发射器
- 2 臀位清洗
- 3 女士清洗
- 4 舒适清洗
- 5 喷头位置
- 6 水温
- 7 座圈温度
- 8 停止
- 9 电池盒

i 可在折页查阅相关参照图示。

2. 符号说明


 **警告** 表示如不可避免可能会导致死亡或严重伤害的危险情况。


 **注意** 表示如不可避免可能会导致轻微或中度伤害的危险情况。

 **公告** 用于表示与身体伤害无关的操作实践。

 此处有小提示。

 此处要求您进行操作。

 声音信号。

 自动定时功能。

3. 保证您的安全

为确保您能尽情享受**SensoWash®**，请仔细阅读本操作说明，特别是安全说明。请妥善保管本操作说明书，如产品需转交给他人使用时，请务必附带本说明书。所有操作说明在印刷交付时均已根据设备最新技术状况进行了确认。**Duravit**保留因进一步发展而作出更改的权利。

3.1 正常使用

SensoWash® Slim是一款附带臀位清洗和女士清洗以及其他舒适功能的电子坐便器，可随时作为普通坐便器使用。它只能用于封闭空间。任何其他使用方式都将视为不符合正常使用。对于非正常使用，**Duravit**不承担任何责任。

3.2 安全说明

请仔细阅读并遵守以下安全说明！

用户要求

- 对于儿童、不了解本设备的人员，以及身体、感官、精神等方面存在缺陷的人员，只有经过安全指导后或在其他人员监督下才可使用本设备。
- 确保儿童不应玩耍本产品。



警告

健康伤害！

本产品必须接地。

> 对照安装说明操作。

仅在设备完全正常的情况下使用该设备

- 确保电源线没有损坏。
- 电源线不能被卡住或挤压。
- 请使电源线远离高温表面和锋利边缘。
- 在该设备无法正常工作时请勿使用它。

立即断开电源。关闭截止阀，停止供水。联系help@duravit.com。

避免因使用不当造成的产品故障和损坏。



注意

健康伤害和可能的产品损坏！

- > 本设备的冷水应从主供水管道连接。
- > 本产品自身不带漏电保护功能，应安装在有漏电保护器的路线中方可安装使用。
- > 固定布线中必须按布线规则配有触点开距提供在过电压等级III条件下全极断开的装置。
- > 根据标签上的额定功率选择合适的电缆规格。
- > 请勿坐在座盖上。请勿站在座盖上。请勿依靠在座盖上。
- > 请勿连通任何废水、混水、工业水、海水或其他未处理或半处理的水。
- > 无论出于任何目的，请不要拆卸座圈和盖板。
- > 不能损坏座圈表面。
- > 如果座圈外表损坏，请立即联系help@duravit.com。
- > 开闭座圈和盖板时请勿用力过大。
- 如果将**SensoWash®**从温度较低的位置移到温度较高的位置，可能出现冷凝湿气。此时请关闭设备数小时。
- 请勿将**SensoWash®**安装在可能结霜的房间内。室内温度不能低于4°C。
- 请勿将明火、蜡烛、烟头或类似物品放在**SensoWash®**上。
- 请勿将**SensoWash®**直接暴露在水中或阳光下。
- 请勿攀爬或站在产品上。
- 请勿在盖板上放置任何重物。
- 请勿故意弄脏、喷洒或堵塞清洗喷管。

维修工作必须由相关专业人员执行。

- 请勿对**SensoWash®**进行改装、处理、加装或修理。
- 如果电源线损坏，为了避免危险，必须由制造商、其维修部或类似部门的专业人员更换。
- 维修必须由合格的电工或技术人员进行。
- 错误修理可能造成事故、损坏和运行故障。
- 请勿使用Duravit未推荐您使用的附件。

电池的使用



警告

如吞咽/化学烧伤危害可能造成的致命危险

- > 本产品包含纽扣电池。请勿吞咽电池！如果意外吞咽电池，可能仅在2小时内造成严重的内部烧伤并导致死亡。
- > 请勿吞咽电池，化学烧伤危害。
- > 请将新电池和使用过的电池置于远离儿童的地方。如果电池盒未安全密封，请停止使用电池，并将电池置于远离儿童的地方。
- > 如果怀疑电池被吞咽或被置于身体任何部位内，请立即寻求医疗救助。



注意

电池酸液泄漏造成的健康伤害

- > 如果电池酸液泄漏，请不要接触皮肤、眼睛和粘膜。
- > 如果不小心接触到酸液，请立即用大量清水冲洗受感染的部位并立即看医生。
- > 请勿将电池暴露在极端条件下：不要接触热源或接受暴晒。否则可能发生电池泄液。
- > 电池应正确处置，包括置于远离儿童的地方。使用过的电池也可能造成伤害。

公告

产品和/或财产损失

- > 请勿为电池充电，不得利用其它工具重新激活电池。禁止拆卸电池或将电池投入火中。
- > 请不要私自接线，电源端子不可以短路。
- > 电池电量耗尽后，请立即从遥控器中取出。否则电池可能泄液并造成损坏。
- > 请勿将新旧电池一起放入遥控器中。
- > 不同型号的电池不能混用。
- > 在装入电池之前请先清洁电池和触点。
- > 请按正确的极性安装电池。
- > 如果遥控器长时间不用，请将电池取出。

4. 操作基础知识

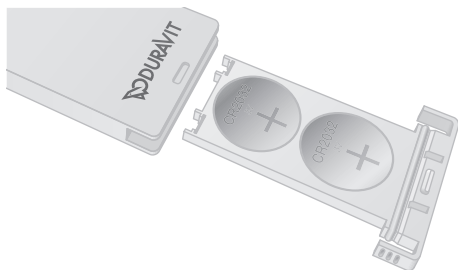
4.1 遥控器

SensoWash®是通过遥控器操作的。设置也通过遥控器进行更改。按下遥控器上的相应按键可激发相应功能。该按键会短暂亮起白色背光。

要关闭清洗功能，请按遥控器上的“停止”按键**8**。

如果遥控器不可用或电池没电了，可以通过侧按键开启或关闭基本功能。

- ＞按下“电池盒”**9**的锁打开它。
- ＞将两粒**CR2032**的锂电池正极朝上放入
- ＞关闭“电池盒”**9**。



4.2 LED状态指示灯

红色常亮: **SensoWash®**处于“待机”模式，不可使用所有功能。

橙色常亮: **SensoWash®**处于“节能模式”，可使用所有功能。

绿色常亮: **SensoWash®**处于“开机模式”，可使用所有功能。

绿色闪烁: **SensoWash®**正处于“初始化”，只有坐便盖本体上的“电源”按键**A**可用。

红色闪烁: 故障。断开主电源，并参照章节**9**继续操作。

5. 初始化操作

遥控器

- ＞按下“电池盒”**9**的锁打开它。
- ＞除去电池仓内的电池隔离片。
- ＞关闭“电池盒”**9**。

电源

- ＞接通主电源。

i SensoWash®接通电源后将启动大约**15**秒的“初始化”。在此期间，只有坐便盖本体上的“电源”按键**A**可用，所有其他操作均无法执行，“LED状态指示灯”**B**绿色闪烁。

开启SensoWash®

要求：SensoWash®处于“待机模式”，“LED状态指示灯”**B**红色常亮。

- ＞按下坐便盖本体上的“电源”按键**A**。

SensoWash®现在已开机。

“LED状态指示灯”**B**处于绿色常亮。

可使用所有功能。

6. 操作

6.1 开启/关闭SensoWash®

- ＞按下坐便盖本体上的“电源”按键**A**，开启SensoWash®。

LED状态指示灯显示绿色表示处于“开机模式”。

- ＞按下坐便盖本体上的“电源”按键**A**，关闭SensoWash®。

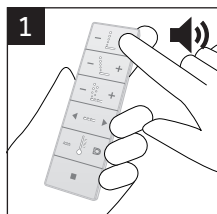
LED状态指示灯显示红色表示处于“待机模式”。

6.2 清洗功能

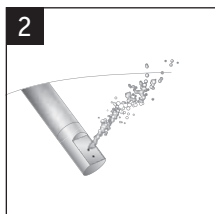
i SensoWash®在使用清洗功能之前和之后会自动清洗缩回的喷头。清洗功能在按下“停止”按键**8**后立即停止或定时**2**分钟后自动停止。



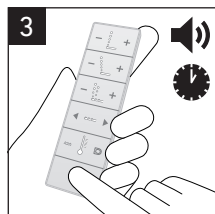
激活/停用“臀位清洗” 轻柔、安全地冲洗臀位。



1 > 按“加号”键或“减号”键激活“臀位清洗”。



2 “臀位清洗”激活，喷管缓慢伸出。

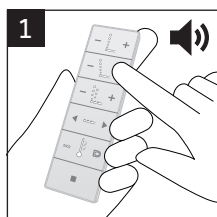


3 > 按“停止”按键停止“臀位清洗”或等待2分钟后自动停止。

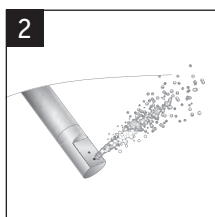
或者按下坐便盖本体上的“臀位清洗”按键**C**激活臀位清洗功能。再次按下坐便盖本体上的“臀位清洗”按键**C**停止臀位清洗或等待2分钟后自动停止。



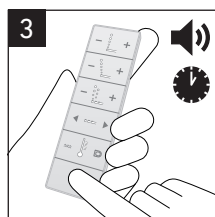
激活/停用“女士清洗” 额外的喷头出口可清洗女士私密部位。



1 > 按“加号”键或“减号”键激活“女士清洗”。



2 “女士清洗”激活，喷管缓慢伸出。



3 > 按“停止”按键停止“女士清洗”或等待2分钟后自动停止。

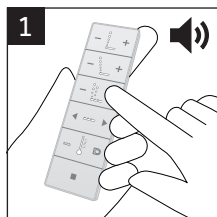
或者按下坐便盖本体上的“女士清洗”按键**E**激活女士清洗功能。再次按下坐便盖本体上的“女士清洗”按键**E**停止女士清洗或等待2分钟后自动停止。



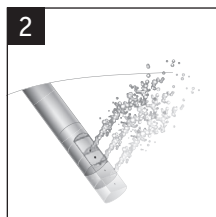
激活/停用“舒适清洗”

在使用清洗功能时喷管前后移动。

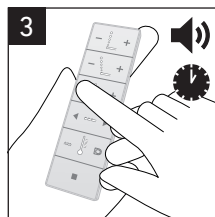
要求：臀位清洗或女士清洗功能已激活。



1 > 按“加号”键
激活“舒适清
洗”功能。



2 “舒适清洗”
功能已激活。



3 > 按“减号”键停止“舒适清
洗”功能。之前设置的功能
(臀位清洗或女士清洗) 仍
处于工作状态。2分钟后自动
停止。



调节喷水强度

喷水强度有3档设置：



低

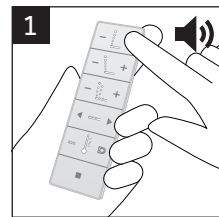


> 中

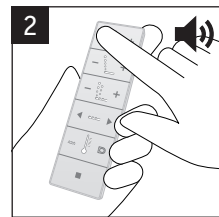


> 高

要求：臀位清洗或女士清洗功能已激活且图标处于常亮状态。



1 > 按“加号”
键增加清洗
强度。



2 > 按“减号”键
调低清洗强
度。

! “女士清洗” 3 操作同上。



调节喷管位置

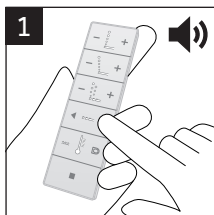
喷管位置有5档设置：



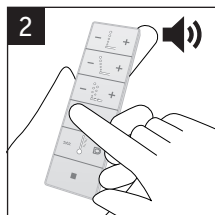
前



后



1
 > 按右箭头使
 喷管向后
 移。



2
 > 按左箭头使
 喷管向前
 移。



调节水温

水温调节有4档设置：



关

>



低

>

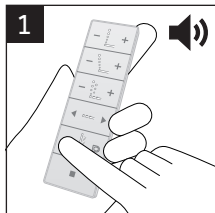


中

>



高



1
 > 按“水温”键
 进行设置。

6.3 座圈加热

调节座圈温度

座圈温度调节有4档设置：



关



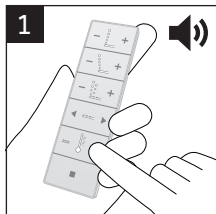
低



中



高



➤ 按“座圈温度”键进行设置。

i 要了解如何节能，请参见第6.4章“设置”。

6.4 设置

设置夜灯

夜灯可以在夜晚照亮陶瓷内壁，即使座盖关闭也可见。
夜灯在自动模式下会根据环境亮度自行打开和关闭。

可通过3个模式分别设置夜灯：

开

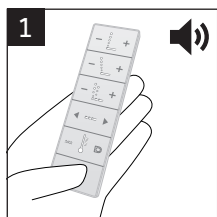


自动

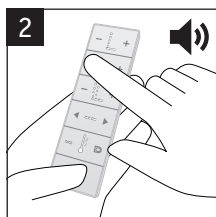


关

按以下按键组合进行夜灯模式的设置。
在设置过程中请一直按住“停止”键。



1
> 按住“停止”键。



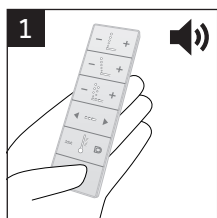
2
> 按下“女士清洗减号”键。

节能模式

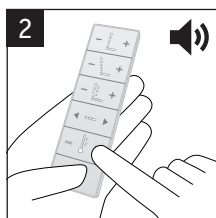
定时节能模式可以让您在想要的时间段内进行节能，比如说晚上。当“定时节能模式”激活时，将在随后的**8**小时内停止座圈加热，然后自动恢复座圈加热**16**小时。每天在同一时间重复此过程，直到停用节能模式为止。

请在想要定时节能模式开始启用的时间点按下以下组合键激活定时节能模式。

在设置过程中请一直按住“停止”键。



1
> 按住“停止”键。



2
> 按下“座圈温度”键。

i状态指示灯显示为绿色：关
状态指示灯显示为橙色：开

要更改“定时节能模式”的时间点，请先停用“定时节能模式”并根据您所需的时间重新设置它。

i 要永久停用座圈加热，请参见第6.3章。

自动节能模式

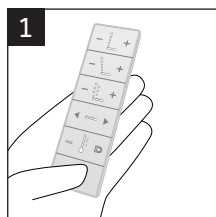
如果48小时内SensoWash®所有功能都未使用，自动节能模式将自动激活。座圈加热现在停止。当使用任何SensoWash®功能时，自动节能模式将会自动退出，并且自动激活之前所有的设置。

激活/停用确认音

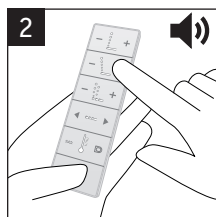
表示产品接收到相关指令。

按以下按键组合进行确认音的设置。

在设置过程中请一直按住“停止”键。



1 > 按住“停止”键。



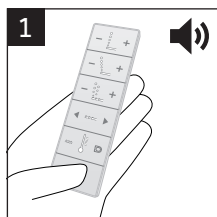
2 > 按下“女士清洗加号”键。

i 较短确认音：开
较长确认音：关

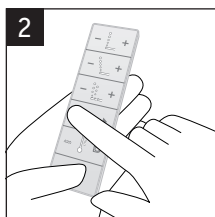
锁定/解锁遥控器

通过遥控器设置锁定功能。激活此功能后，遥控器将无法使用。

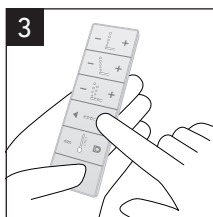
i 在5秒内按下下列组合按键，锁定/解锁遥控。
在设置过程中请一直按住“停止”键。



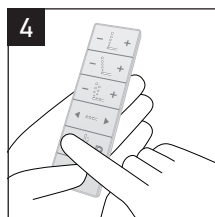
1 > 按住“停止”键。



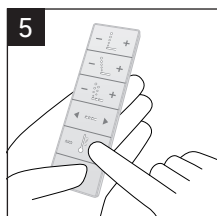
2 > 按下“喷头位置左箭头”键。



3 > 按下“喷头位置右箭头”键。



4 > 按下“水温”键。



5 > 按下“座圈温度”键。

i 喷管位置和温度图标闪烁三次： 锁定
 喷管位置和温度图标闪烁一次： 解锁

7. 清洁和维护

7.1 座圈和盖板

公告

由于清洁不当导致褪色变黄或喷漆剥离！

- > 请勿使用腐蚀性清洗剂或者含有氯或酸的清洗剂。
- > 仅使用专用于此应用区域的清洗剂和设备。
- > 按照清洗剂制造商的说明操作。
- > 决不能混用清洁剂。

中性皂液是理想的日常清洁剂。

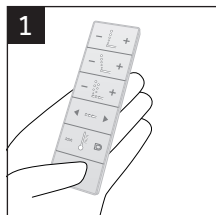
定期清洁坐便器本体，或在沾上污垢后立即清洁。如果不经常进行清洁，污垢可能变得比较明显，从而形成顽固污垢。

7.2 喷管和喷头

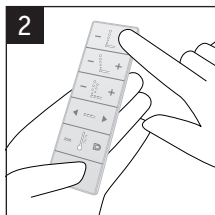
手动清洁喷管和喷头

定期清洁喷管喷头，或在发现污垢后立即清洁。

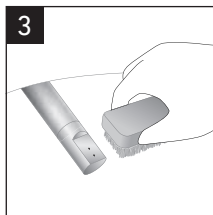
如要拆下喷头进行清洁，请参照折页进行清洁。



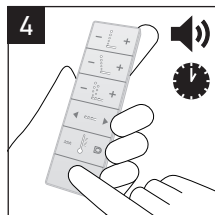
1 > 按住“停止”键。



2 > 按下“臀位清洗加号”键。



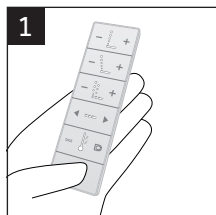
3 > 用布、海绵或者刷子和中性清洗剂清洁喷头。



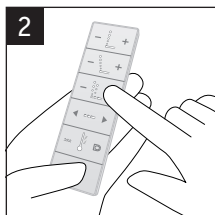
4 > 按停止结束清洁，或2分钟后，喷管自动缩回。

喷管和喷头的自洁功能

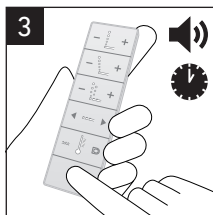
喷管和喷头可自动清洗。



1 > 按住“停止”键。



2 > 按下“舒适清洗加号”键。



3 > 按“停止”按键停止清洗或等待90秒后自动停止。

i 喷管和喷头在使用前后自动进行清洁。

7.3 遥控器

> 使用柔软的湿布清洁遥控器和遥控器支架。

8. 废弃物处理



如果带有垃圾桶画叉的标志，则说明这类废弃物需要单独分类到废弃电子电气设备中(WEEE)。电子电气设备可能包含危险或有害物质。请勿将其作为未分类的生活垃圾丢弃。请将其送至WEEE指定的回收点。如此一来，您可以为资源节约和环境保护做出贡献。请与您的零售商或当地相关部门联系，获取更多信息。

用完的电池必须正确进行处理。为此，在出售电池的商店及社区收集站提供了带有相应标签的电池回收箱。

为避免可能的窒息伤害或危险，请勿让孩子玩塑料袋和产品包装。请妥善保管此类包装材料或以环保的方式将其丢弃。如果可能，请将包装材料一直保留至保修期结束。

9. 故障解答

建议：出现故障时的初始基本操作

＞ 切断产品的主电源，至少**3**小时后再重新接通。

如果在按照下面所述的说明操作后您的设备仍无法正常工作，请拨打 help@duravit.com。准备好产品编号和序列号。可在操作说明背面铭牌中找到这些内容。

问题	可能原因	解决方法	章
----	------	------	---

指示灯和报警功能

坐便盖本体上的“LED状态指示灯”**B**每3秒闪烁红色一次。

故障。

- ＞ 关闭SensoWash®。
- ＞ 再次开启SensoWash®。
- 如果仍然红色闪烁：
- ＞ 切断电源。
- ＞ **30**秒后，重新连接电源。

问题	可能原因	解决方法	章节
坐便盖本体上的“LED状态指示灯” B 每3秒闪烁红色两次。	故障。	<ul style="list-style-type: none"> ＞ 关闭SensoWash®。 ＞ 再次开启SensoWash®。 如果仍然红色闪烁：拨打 help@duravit.com 。	
坐便盖本体上的“LED状态指示灯” B 每3秒闪烁红色三次。	故障。	<ul style="list-style-type: none"> ＞ 拨打 help@duravit.com。 	
坐便盖本体上的“LED状态指示灯” B 每3秒闪烁红色四次。	故障。	<ul style="list-style-type: none"> ＞ 关闭“水温”6。 ＞ 激活任意清洗功能。 	6.2
听到连续的确认证音。	故障。	<ul style="list-style-type: none"> ＞ 切断电源。 ＞ 30秒后，重新连接电源。 	

基本功能			
SensoWash®无法工作。	SensoWash®已关机（“状态指示灯” B 不亮）。	<ul style="list-style-type: none"> ＞ 接通主电源。 	
	SensoWash®处于待机模式（“状态指示灯” B 显示为红色）。	<ul style="list-style-type: none"> ＞ 切换到“开机”模式。 	6.1
漏水。	故障。	<ul style="list-style-type: none"> ＞ 关闭水源主阀门。 ＞ 断开电源。 ＞ 联系安装工。 	

问题	可能原因	解决方法	章节
遥控器			
操作期间，遥控图标闪烁（而不是常亮）。	电池电量低。	＞更换电池。	4.1
遥控器不工作。	未装入电池。	＞装入电池。	4.1
	电池电量用完。	＞更换电池。	4.1
	电池正负极装反。	＞按正确方式装入电池。	4.1
	遥控被锁定（“喷管位置” 5 和“温度” 6 闪烁三次）。	＞解锁遥控器。	6.4
	遥控器有缺陷。	＞联系安装工	

臀位清洗/女士清洗			
在臀位清洗和女士清洗之间切换所需的时间过长。	在臀位清洗和女士清洗之间切换时，喷头需要缩回自洁后再伸出。	这是正常的。	
喷水强度太弱。	喷水强度已设置为“低”。	＞将“喷水强度” 2 或 3 调为“中”或“高”。	6.2
	进水软管变形。	＞联系安装工	
水温不够高。	水温已设置为“关”或“低”。	＞将“水温” 6 调为“中”或“高”。	6.2
水温太高。	“水温” 6 已经设置为“高”。	＞将“水温” 6 调为“中”或“低”。	6.2
喷管突然停止喷水。	该功能在2分钟后自动停止。	这是正常的。	
喷管不出水。	喷头堵塞。	＞清洗喷头。	7.2

问题	可能原因	解决方法	章节
座圈加热			
座圈不够热。	“座圈温度” 7 已经设置为“关”或“低”。	<ul style="list-style-type: none"> 将“座圈温度” 7 调整为“中”或“高”。 	6.3
	该产品处于“定时节能模式”。	这是正常的。 <ul style="list-style-type: none"> 要加热座圈，请关闭“定时节能模式”。 	6.3
座圈温度太高。	“座圈温度” 7 已设置为“高”。	<ul style="list-style-type: none"> 将“座圈温度” 7 调整为“中”或“低”。 	6.3

夜灯功能			
夜灯不亮。	夜灯已设置为“关”模式。	这是正常的。 <ul style="list-style-type: none"> 将夜灯设置为“自动”或“开”模式。 	6.4
	夜灯处于“自动”模式，环境光很强。	这是正常的。	
夜灯一直处于打开状态。	夜灯已设置为“开”模式。	这是正常的。 <ul style="list-style-type: none"> 将夜灯设置为“自动”或“开”模式。 	6.4
	夜灯处于“自动”模式，环境光很弱。	这是正常的。	
	环境光感应器窗口不干净。	<ul style="list-style-type: none"> 清洁“环境光感应器” D 窗口。 	

喷管的手动清洁功能			
喷管自动缩回。	该功能在2分钟后自动停止。	这是正常的。	

喷管和喷头的自洁功能		
缩回的喷管滴水。	喷管在清洗功能前后自动清洗。	这是正常的。

10. 技术参数

产品编号	611000 00 2 10 0300 611200 00 2 10 0300
额定电压	220 - 240V
频率	50-60Hz
额定功率	1080W
温度范围	
• 工作温度	4 – 40°C
• 水温	32 – 40°C
• 座圈温度	33 – 37°C
适合水压	0.07 – 0.75MPa (0.7 - 7.5bar)
清洗水量	0.35 - 0.60l/min
防水等级	IP X4 全方位防溅水保护
质保	通用质保条款和条件请查阅 www.pro.duravit.com/gtc

Duravit AG
P.O. Box 240
Werderstr. 36
78132 Hornberg
Germany
Phone +49 78 33 70 0
Fax +49 78 33 70 289
info@duravit.com
www.duravit.com

